

PART OF S.W. 1/4, SEC. 21, T.7 N., R.1 W.

87

LAKEVIEW HEIGHTS SUBDIVISION, PHASE-I

AMENDED PLAT

P. R. U. D.

LOTS 75-79 104, 106-112

IN NORTH OGDEN CITY

SCALE 1" = 50'

TAXING UNIT: 10

PREFIX: 16-087

EXCEPT WHERE OTHERWISE SHOWN
ALL LOTS OWNED BY
BEN LOMOND ESTATES

SEE PAGE 91

SEE PAGE 42

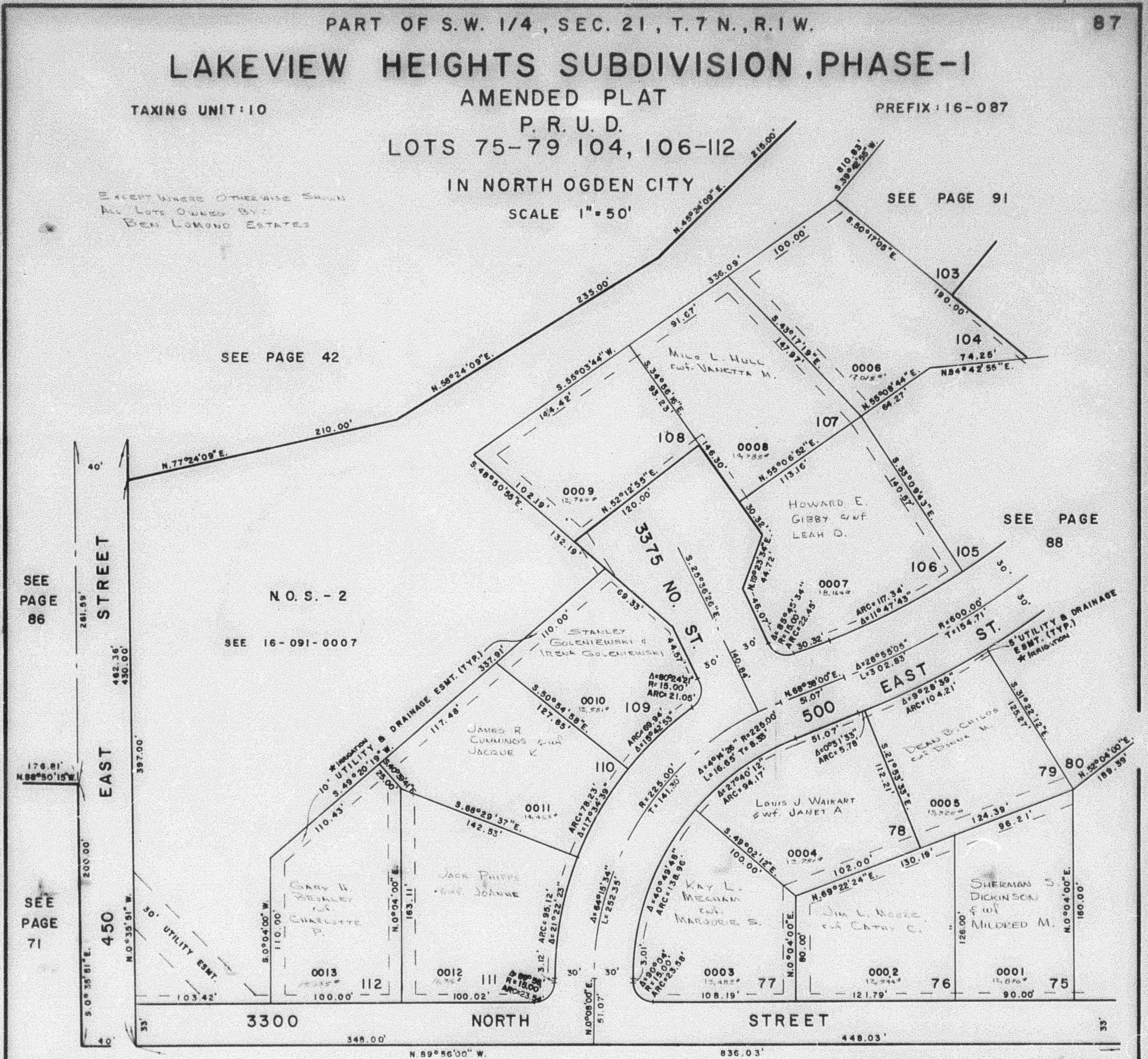
SEE PAGE 86

N.O.S. - 2

SEE 16-091-0007

SEE PAGE 88

SEE PAGE 71



FOR COMPLETE ENG. DATA
SEE ORIG. DED. PLAT IN
BOOK 23, 75 TO 84

★ SEE CERTIFICATION
(1296 - 429)

SEE BOOK 17, PAGE 1